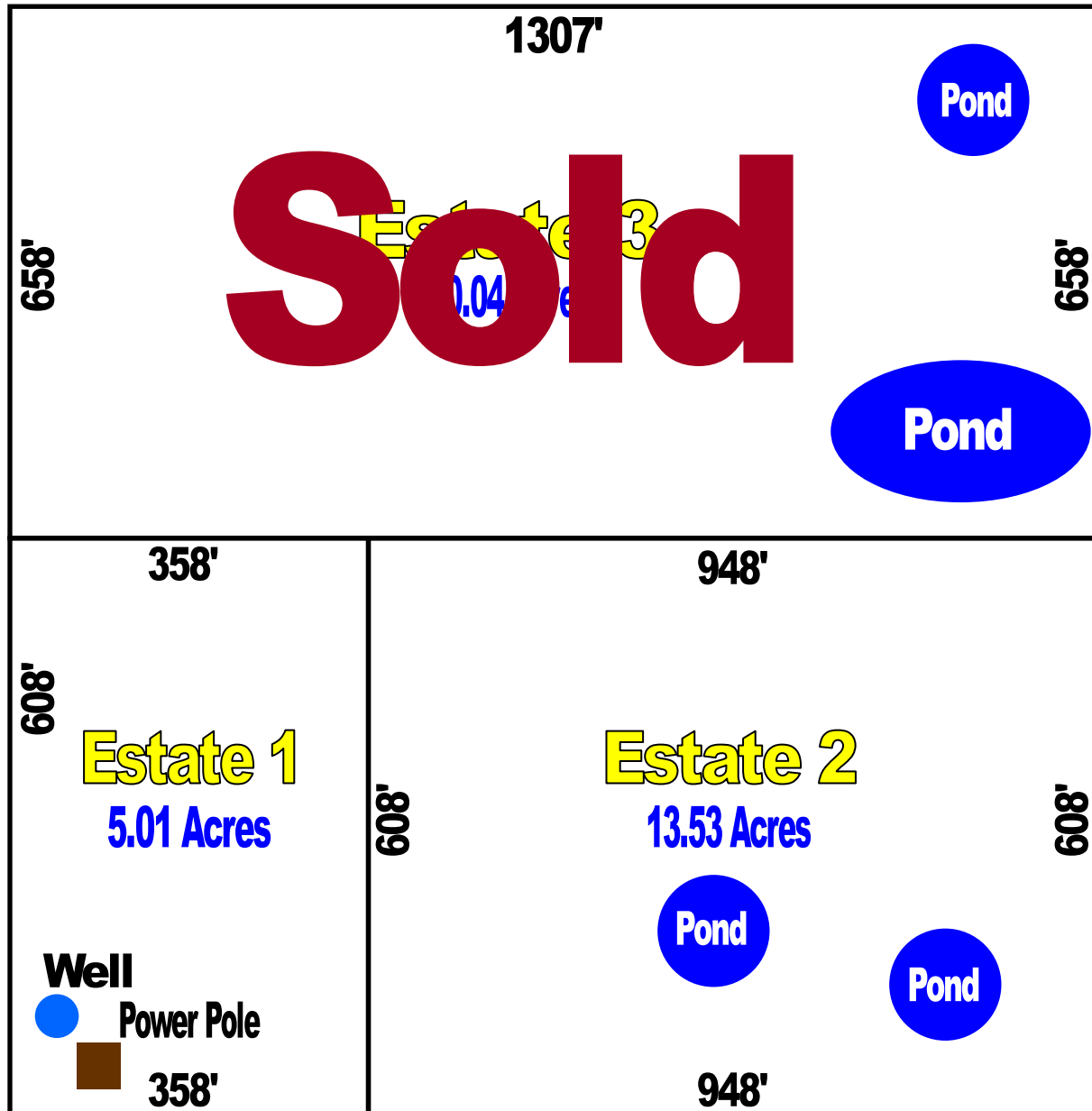




## Barnes Estates Sales Plat



## County Road 250

Automatic, Non-Qualifying Seller Financing is available with **NO** Pre-Payment Penalties

Estate	Acreage	Sales Price	Down	Monthly	Rate	Term
1	5.01	\$64,995	\$6,495	\$489	8.90%	25 Years
2	13.53	\$129,995	\$12,995	\$975	8.90%	25 Years
3	20.04	\$159,995	\$15,995	\$1,200	8.90%	25 Years