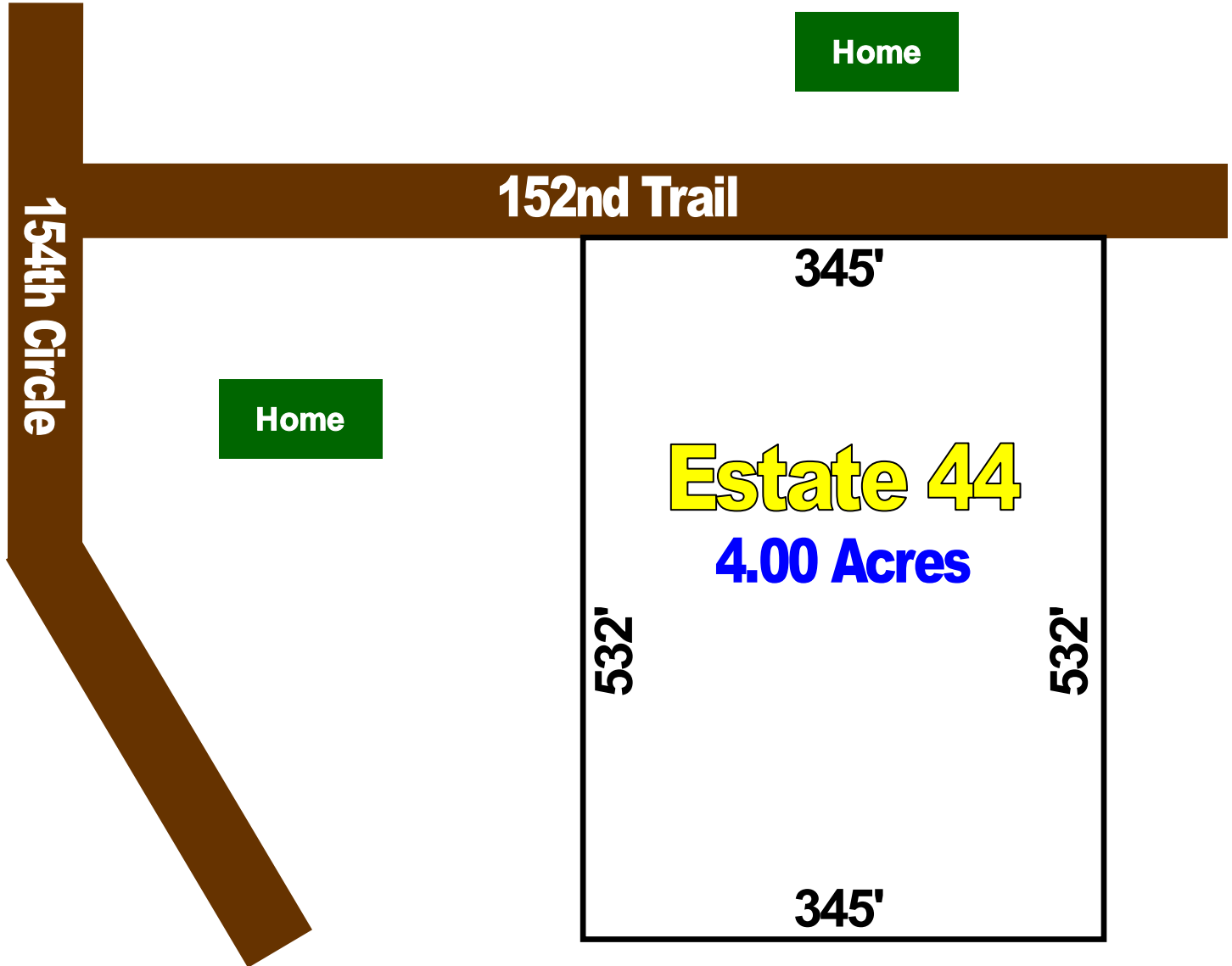




Quailwood Sales Plat



Map Not to Scale

**Refer to recorded plat for survey details*

Automatic, Non-Qualifying Seller Financing is available with **NO** Pre-Payment Penalties

Estate	Acreage	Sales Price	Down	Monthly	Rate	Term
44	4.00	\$64,995	\$12,995	\$420	8.50%	25 Years