

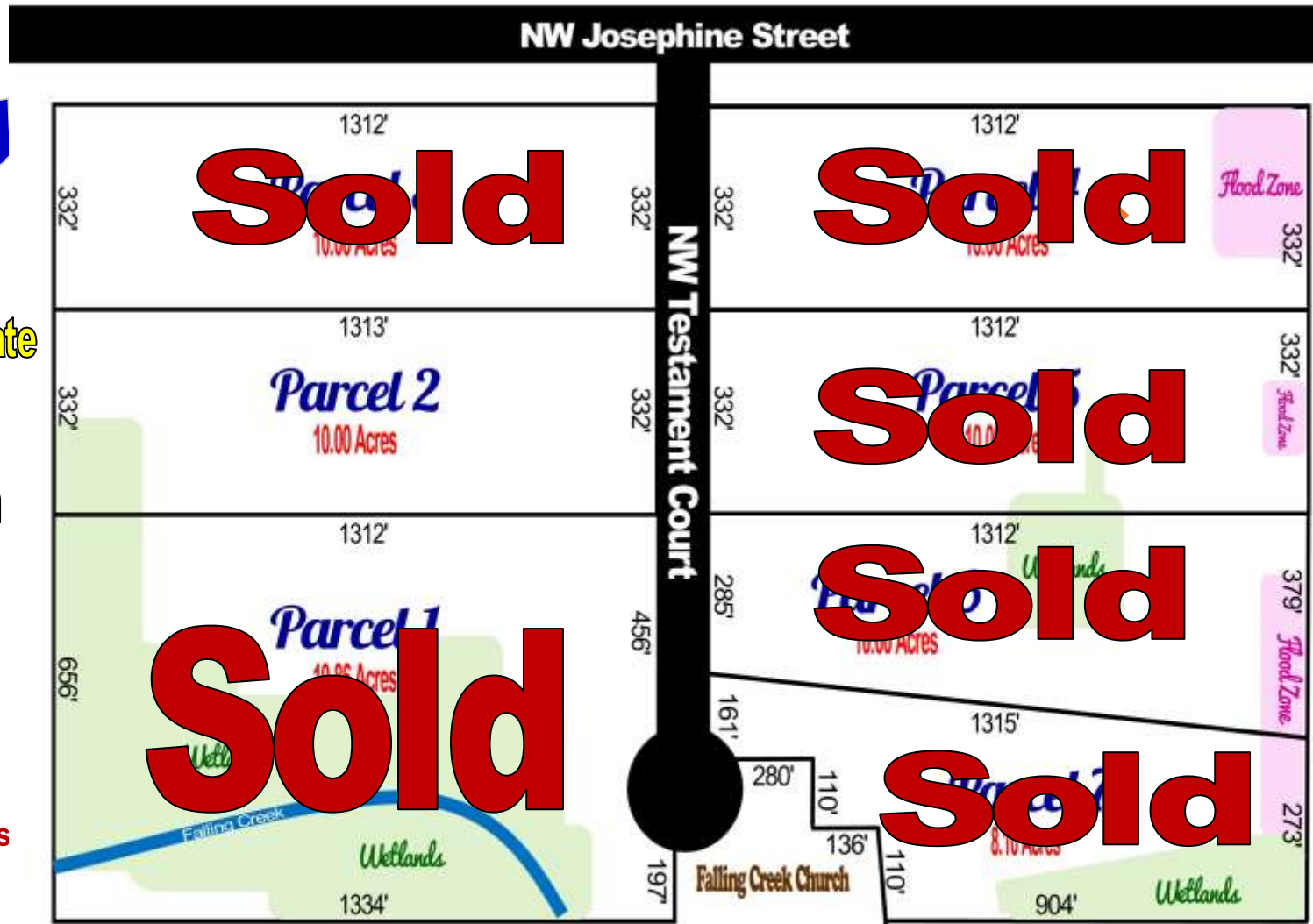
Josephine Acres

Offered by Jim Jean Real Estate

352-339-4487

www.JimJean.com

*Refer to Recorded Plat for exact details



Automatic, Non-Qualifying Seller Financing:

Estate	Acreage	Sales Price	Down	Monthly	Rate	Term
2	10.00	\$129,995	\$25,995	\$840	8.50%	25 years